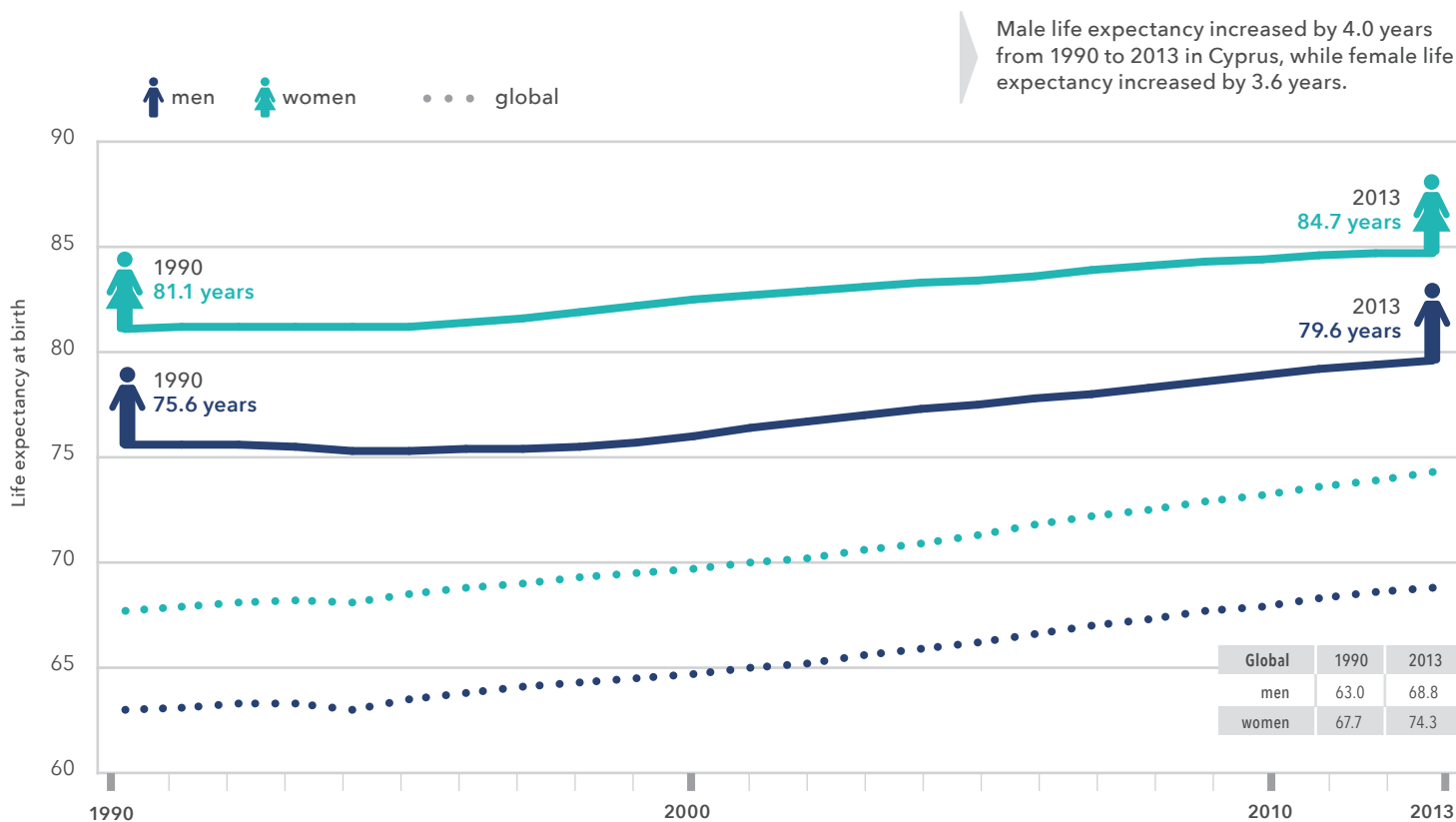


Cyprus

Findings from the Global Burden of Disease Study

Life expectancy globally and in Cyprus, 1990-2013



The Global Burden of Disease: 2013 study results

This profile provides findings from the Global Burden of Disease (GBD) study 2013. The GBD study empowers decision-makers to compare the impacts of different health threats that kill people prematurely and cause poor health to see how much progress they have made in tackling these threats. GBD 2013 tracks years lost from more than 300 diseases, injuries, and risk factors. GBD can be used at the global, national, and local levels to understand health trends over time and to measure whether people are getting healthier. Decision-makers can also use GBD to benchmark their country's health progress relative to its peers and identify health disparities within its borders.

GBD estimates are based on more than 50,000 different data sources such as death certificates, household surveys, and examination surveys. GBD researchers use statistical modeling to produce the

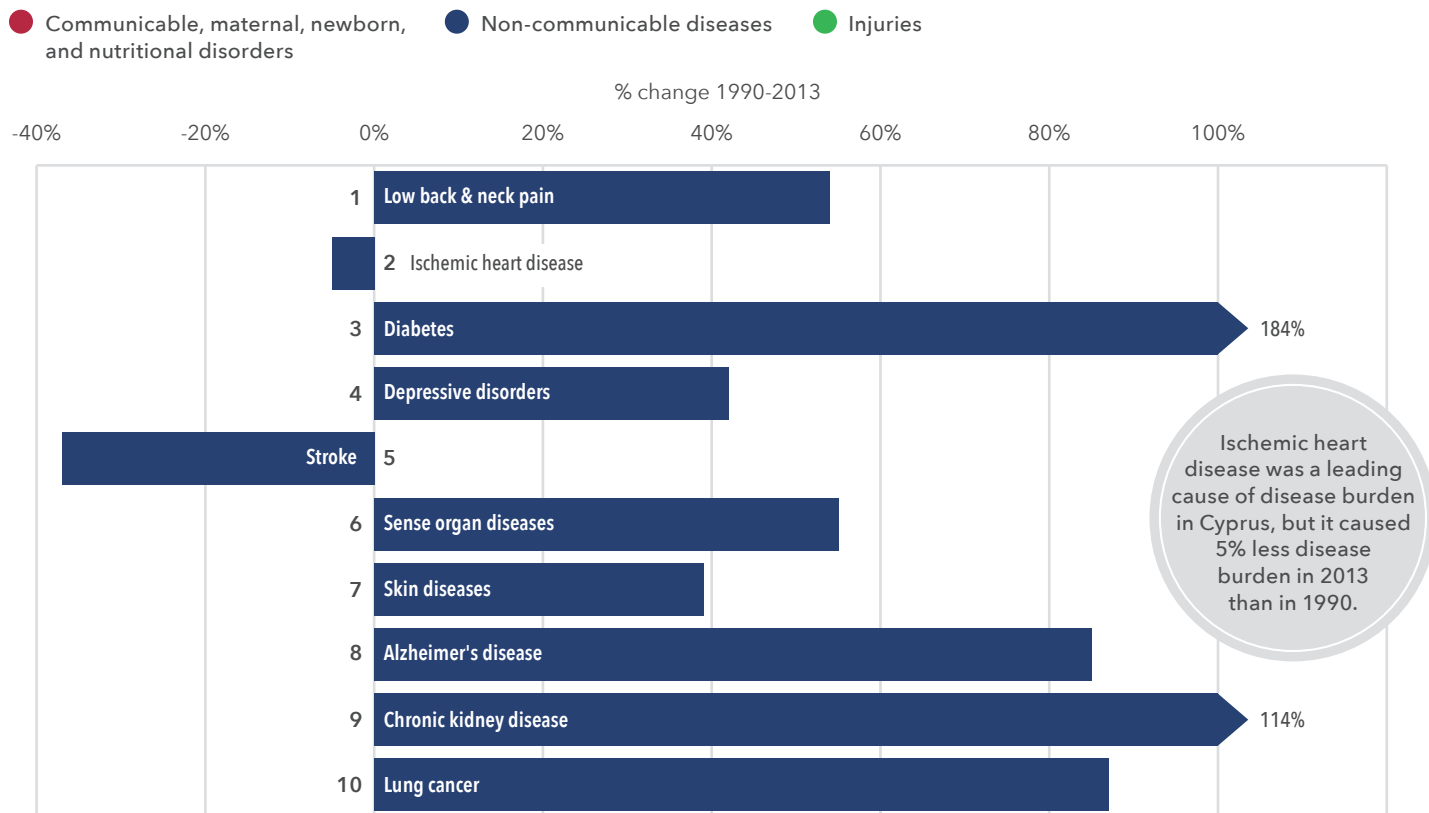
most scientifically rigorous estimates possible. Estimates from the Global Burden of Disease study may differ from national statistics due to differences in data sources and methodology.

GBD brings together a strong community of health specialists who are passionate about improving health through science. Through their knowledge about local and regional health, more than 1,000 GBD experts, who hail from government agencies, universities, and research institutions in 120 countries, are answering some of the world's most important questions about health. As the coordinators of the GBD study, we invite you to join this groundbreaking effort by becoming a GBD expert.

For more information, visit www.healthdata.org/gbd. Please send feedback and questions to engage@healthdata.org.



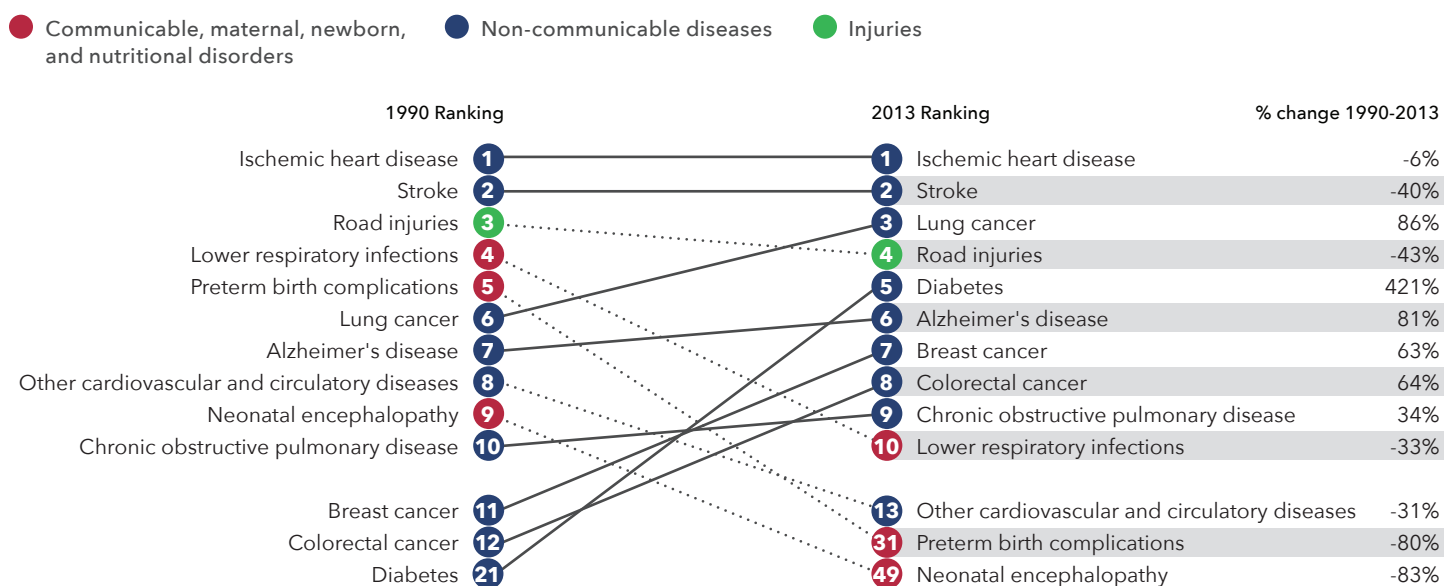
Leading causes of disability-adjusted life years in 2013 and percent change, 1990-2013



Disability-adjusted life years (DALYs) are the sum of years of healthy life lost to premature death and years lived with disability.

Pointed arrows indicate causes that have increased or decreased by a greater amount than shown on the x-axis.

Leading causes of years of life lost to premature death, 1990 and 2013, and percent change, 1990-2013



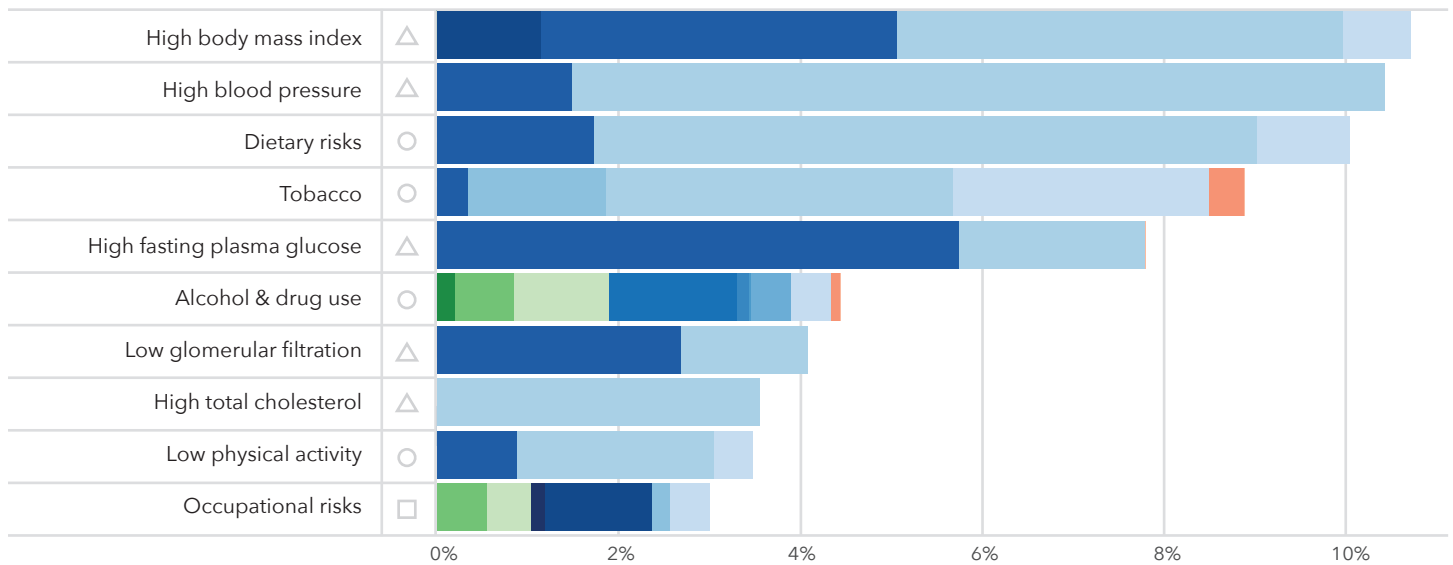
While remaining a leading cause of YLLs in 2013, premature death from road injuries decreased by more than one-third from 1990 to 2013 in Cyprus.

Years of life lost (YLLs) are years of life lost due to premature mortality.

Burden of disease attributable to leading risk factors, 2013

expressed as a percentage of Cyprus DALYs

○ Behavioral △ Metabolic □ Environmental

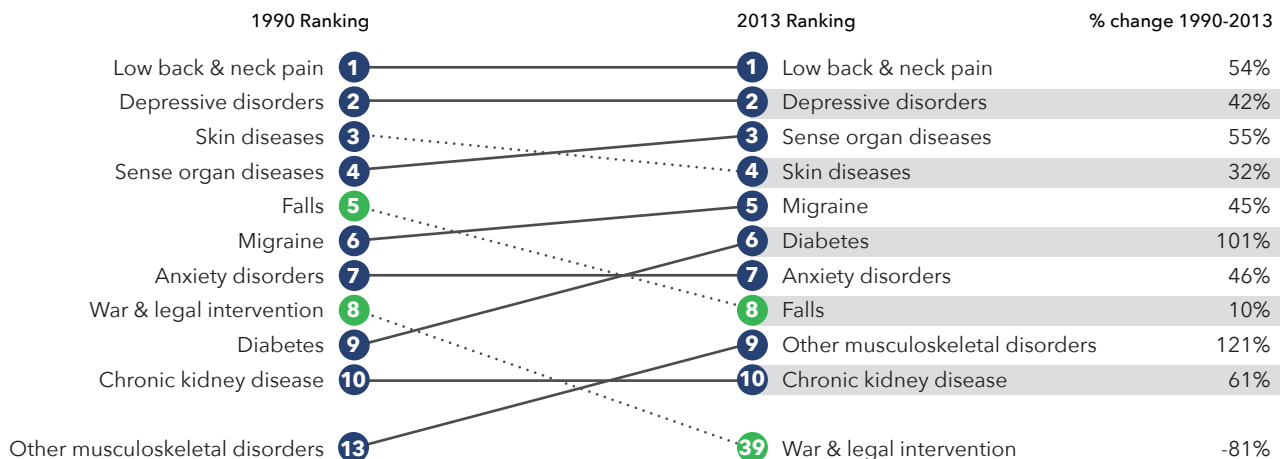


Risk factors are potentially modifiable causes of disease and injury.



Leading causes of years lived with disability, 1990 and 2013, and percent change, 1990-2013

● Communicable, maternal, newborn, and nutritional disorders ● Non-communicable diseases ● Injuries



Low back and neck pain continue to be major contributors to Cyprus's burden of disabling conditions - responsible for nearly three times as many YLDs in 2013 as depressive disorders.

Years lived with disability (YLDs) are years lived in less than ideal health. This includes conditions that may last for only a few days, as well as conditions that can last a lifetime.

Rates of premature death* in Cyprus versus comparison countries, 2013

© Commonwealth country

	Rank 1	Rank 2	Rank 3	Rank 4	Rank 5	Rank 6	Rank 7	Rank 8	Rank 9	Rank 10
	Ischemic heart disease	Stroke	Road injuries	Lung cancer	Diabetes	Alzheimer's disease	Breast cancer	Colorectal cancer	Lower respiratory infections	COPD
© Cyprus	1,451	505	470	457	339	296	236	214	187	172
Comparison group average	1,216	508	330	600	160	282	243	315	210	272
© Australia	994	409	352	522	177	263	233	312	127	276
© Canada	1,181	324	357	760	216	346	243	316	179	259
France	761	404	358	785	129	178	278	307	173	161
Germany	1,335	497	241	632	156	289	256	323	183	279
Greece	2,054	962	622	789	95	306	260	269	197	346
Ireland	1,481	504	255	638	117	304	303	347	337	362
Italy	883	487	381	571	187	337	238	302	100	185
Japan	525	658	180	417	47	99	137	303	393	154
© Malta	1,578	554	177	455	162	164	273	307	250	197
© New Zealand	1,353	476	473	571	179	291	289	427	120	378
Norway	1,055	491	215	582	127	355	194	405	212	330
Spain	942	489	311	619	127	307	215	358	210	288
Sweden	1,348	500	187	436	155	230	200	330	164	208
Switzerland	869	397	220	528	127	309	244	245	129	175
© United Kingdom	1,170	520	198	653	77	295	294	315	348	383
United States	1,697	457	615	782	310	422	238	282	268	472

This table shows the top 10 causes of premature death in Cyprus. It can be used to compare rates* across countries relative to the group average. Comparison groups were chosen based on income classifications.

*Rates are in years of life lost per 100,000 and are age standardized

